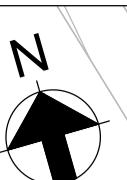


Ordnance Survey Ireland Licence No. EN 0002819 ©  
Ordnance Survey Ireland/Government of Ireland



**Services Legend**

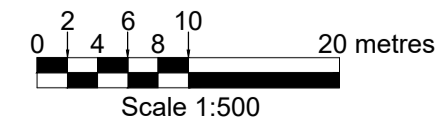
- Proposed surface water pipe and manhole
- Proposed filter drain and catchpit manhole
- Bypass separator
- Headwall
- Proposed foul sewer
- Proposed manhole
- Planning Corridor
- Proposed watermain
- Proposed Air Valve. Refer to STD-W-22
- Proposed Hydrant. Refer to STD-W-18
- Proposed Sluice Valve. Refer to STD-W-15
- Proposed Scour Valve. Refer to STD-W-30
- Proposed Washout Hydrant. Refer to STD-W-30A
- Proposed Meter Chamber. Refer to STD-W-26
- Existing watermain

**Legend**

- Proposed HVAC Cable Route
- Proposed HVDC Cable Route

**Notes**

- All dimensions in metres unless noted otherwise.
- Do not scale, use figured dimensions only.
- Drawings for planning purposes only, not for bid or construction.
- Land levels shown relate to Ordnance Datum Main Head unless otherwise noted.
- Coordinates shown are to Irish Transverse Mercator in metres.



PL3	12/11/20	EG	SOS	EJL
Issued for Planning				
PL2	10/06/20	EG	SOS	EJL
Issued for Planning				
PL1	13/03/20	TB	TB	EJL
Issued for Planning				
Rev	Date	By	Chkd	Appd



Client

Project Title  
Greenlink Interconnector

Drawing Title  
Great Island Converter Station  
Site Services Layout Plan  
Alternative 1 - Sheet 1 of 2

Scale at A1	1:500
Role	Civils
Suitability	Planning
Arup Job No	246369-00
Name	C-CS-010-01
Rev	PL3